



*Bring Your ideas
Into Reality*

Fine Pitch LED Display

MS Series Design (1.56 / 1.95 / 2.5 / 2.604 / 2.9 / 39)

- Module Size: 250*250 mm
- Cabinet Material: Aluminum

MS Series Design

Cabinet Size

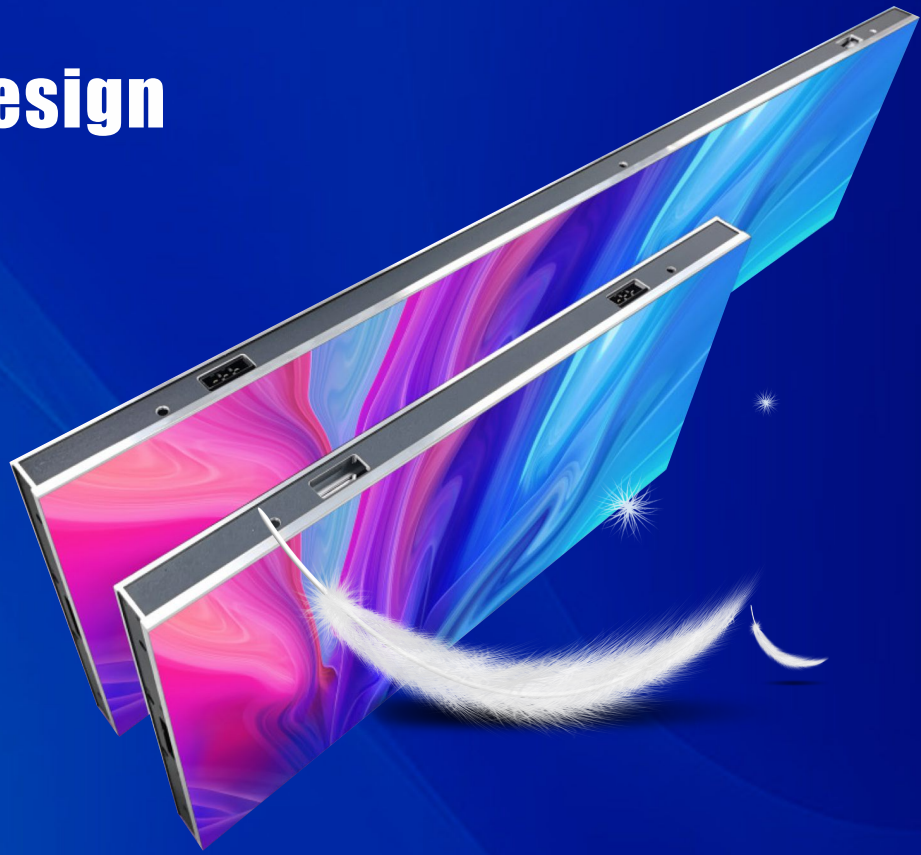
1000x250x33mm

750x250x33mm

500x250x33mm

Cabinet Weight

2.9kg/4.5kg/5.8kg



Cabinet is lighter and slimmer, it reduces the transportation cost and installation labor cost

MS Series Appearance

500x250x33mm



750x250x33mm



1000x250x33mm



Back

Side

Front

MS Series Features

Ultra thin (thickness only 33mm).

Ultra light (single box weight is only 5.8kg/2.9kg).

Front maintenance, simple structure and easy installation.

The appearance is fashionable and simple, ultra-thin and beautiful.

Support split screen multi screen display.

Clear image quality, high brightness and contrast, good color saturation.



Aluminum Cabinet

All aluminum cabinet design
Seamless splicing
Automatic heat dissipation

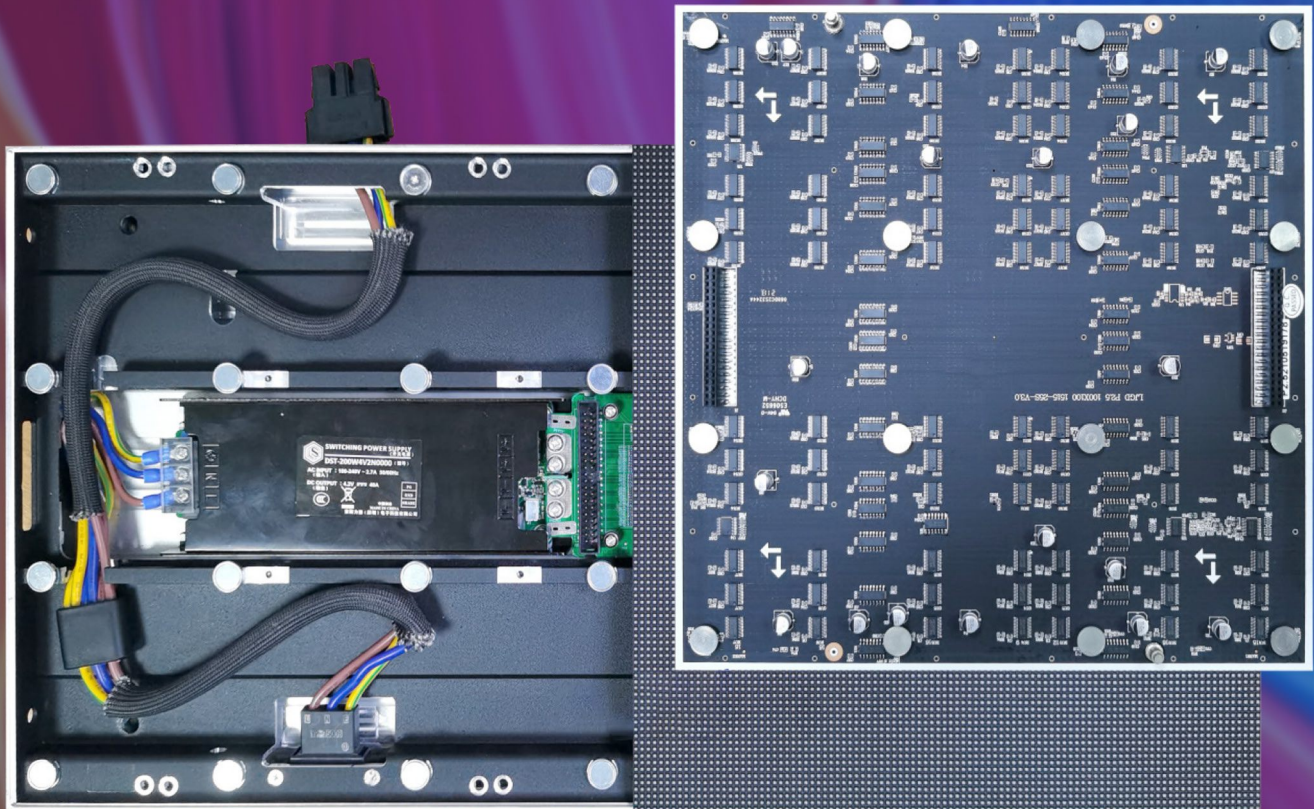
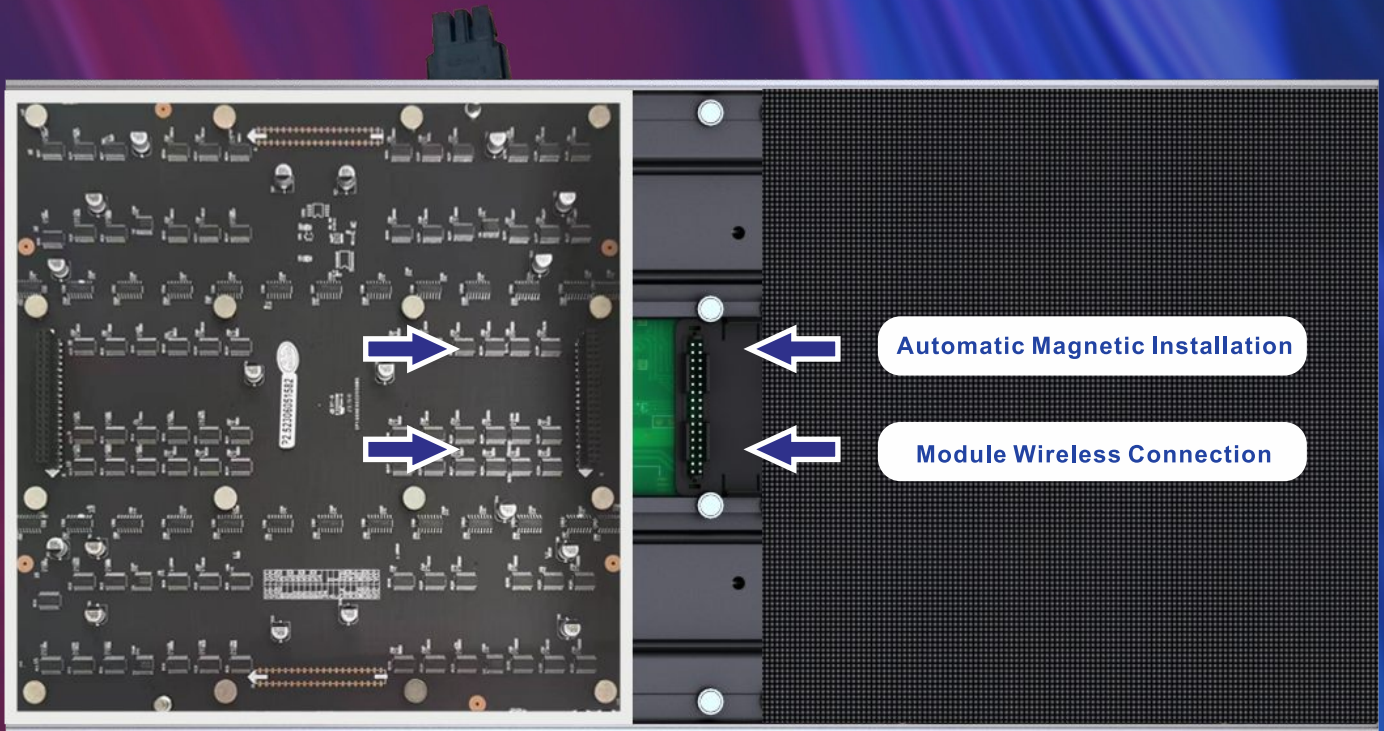


Full Front Maintenance Design



Hard Connection, Flat Cable Design

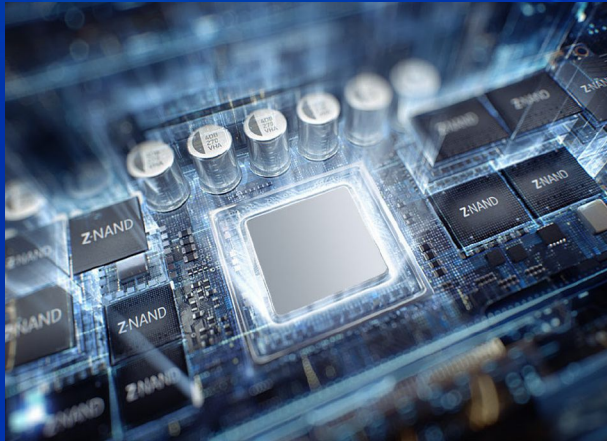
The hard connection design between the group and the box completely gets rid of the bondage of wires. All aluminum cabinet, fast heat dissipation.



The module and box are adsorbed by multiple magnetic columns, which are firm and do not fall off.



160° Ultra Wide Viewing Angle



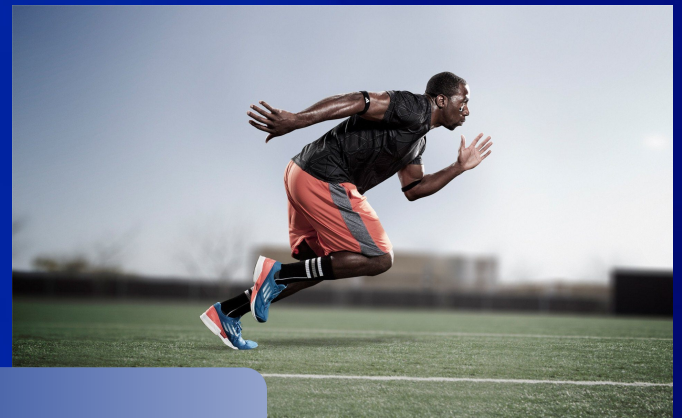
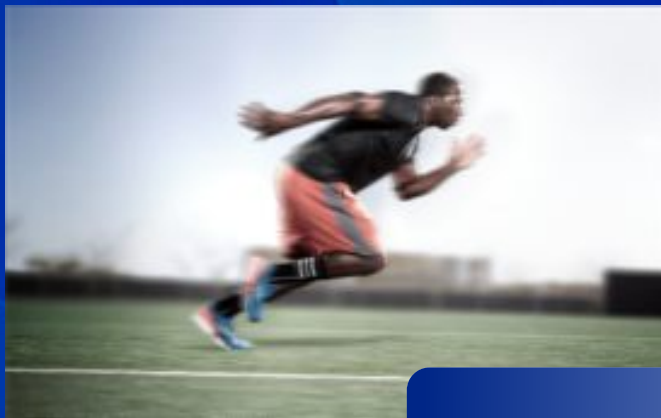
High Energy Efficiency Driver Chip

16 PWM constant current output, 16 ~ 32 sweep free selection.

It has excellent anti-interference characteristics.

Constant current and low ash effect are not affected by PCB.

Accurately control the luminous brightness of LED



3840Hz Refresh Rate



16:9

2K

4K

8K

16K

- 16bit Gray level
- 5000:1 high contrast ratio
- 78.7 billion colors



Installation Mode



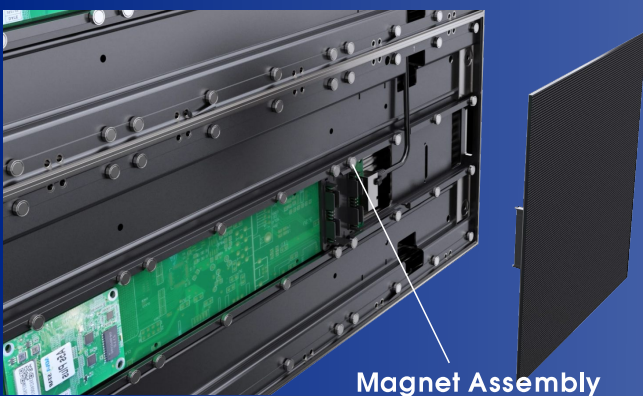
Wall Mounting



Hanging



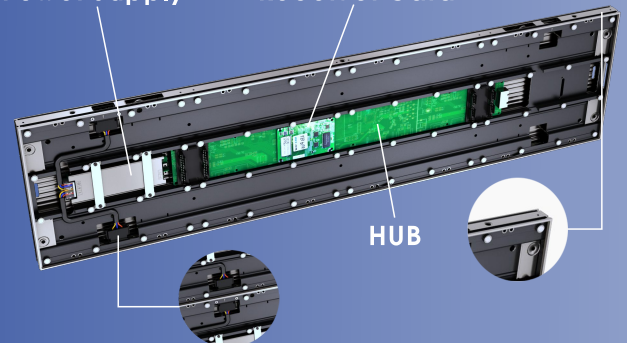
Variety of Shapes



Magnet Assembly

Power Supply

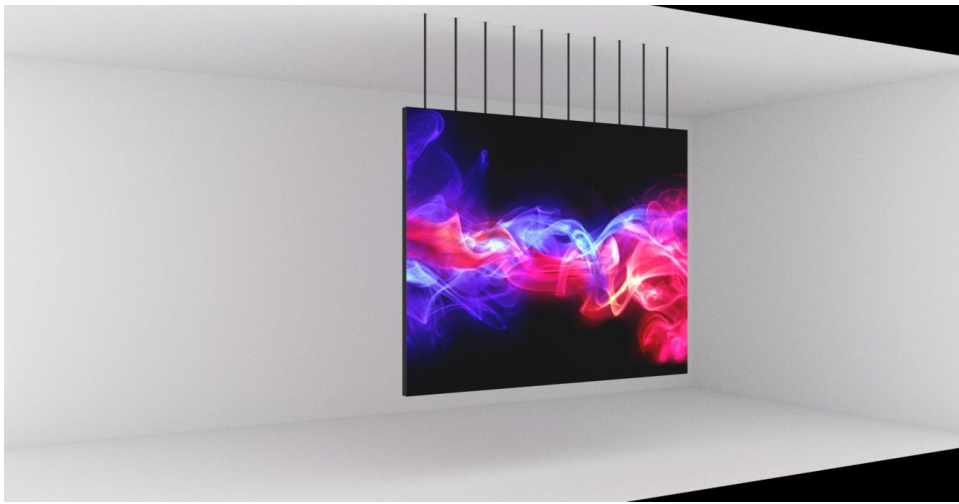
Receiver Card



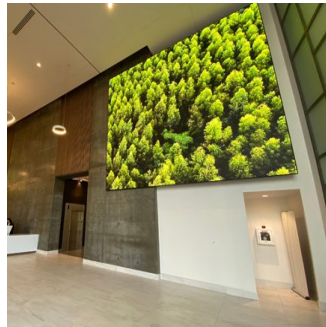
HUB

Details of cabinet

Modules and cabinet are adsorbed by multiple magnetic columns, which is firm



Application



Specifications

Item	MS1.25	MS 1.5625	MS 1.95	MS 2.5
LED Type	SMD1010	SMD 1212	SMD 1515	SMD 1515
Physical Density (dot/m ²)	640,000	409,600	262,144	160,000
Module Resolution (WxH)mm	200x200	160x160	128x128	100x100
Module Size (WxHxD)mm	250x250	250x250	250x250	250x250
Module Combination	4X1/3X1/2X1	4x1/3x1/2x1	4x1/3x1/2x1	4x1/3x1/2x1
Installation Way	Front Installation	Front Installation	Front Installation	Front Installation
Cabinet Material	Aluminum	Aluminum	Aluminum	Aluminum
Single Dots Brightness Correction	Yes	Yes	Yes	Yes
Brightness (cd/m ²)	600~800	600~800	600~800	800~1000
Drive Mode	1/50	1/40	1/32	1/25
Color Temperature (K)	3200-9300(adjustable)			
Gray Scale (bit)	14/16 Option			
Viewing Angle (H/V)	160°/160°			
Color Uniformity	≥97%			
Contrast Ratio	5000:1			
Frame Frequency	50/60			
Max Power Consumption	800			
Avg Power Consumption	100-200			
Certification	RoHS/FCC/CE			

Specifications

Item	MS 2.604	MS 2.976	MS 3.91
LED Type	SMD 1515	SMD 1515	SMD 1212
Physical Density (dot/m ²)	147,456	112,896	65,536
Module Resolution (WxH)mm	96x96	84x84	64x64
Module Size (WxHxD)mm	250x250	250x250	250x250
Module Combination	4x1/3x1/2x1	4x1/3x1/2x1	4x1/3x1/2x1
Installation Way	Front Installation	Front Installation	Front Installation
Cabinet Material	Aluminum	Aluminum	Aluminum
Single Dots Brightness Correction	Yes	Yes	Yes
Brightness (cd/m ²)	800-1000	800-1000	800-1000
Drive Mode	1/32	1/28	1/16
Color Temperature (K)	3200-9300(adjustable)		
Gray Scale (bit)	14/16 Option		
Viewing Angle (H/V)	160°/160°		
Color Uniformity	≥97%		
Contrast Ratio	5000:1		
Frame Frequency	50/60		
Max Power Consumption	800		
Avg Power Consumption	100-200		
Certification	RoHS/FCC/CE		

