



Indoor LED Display

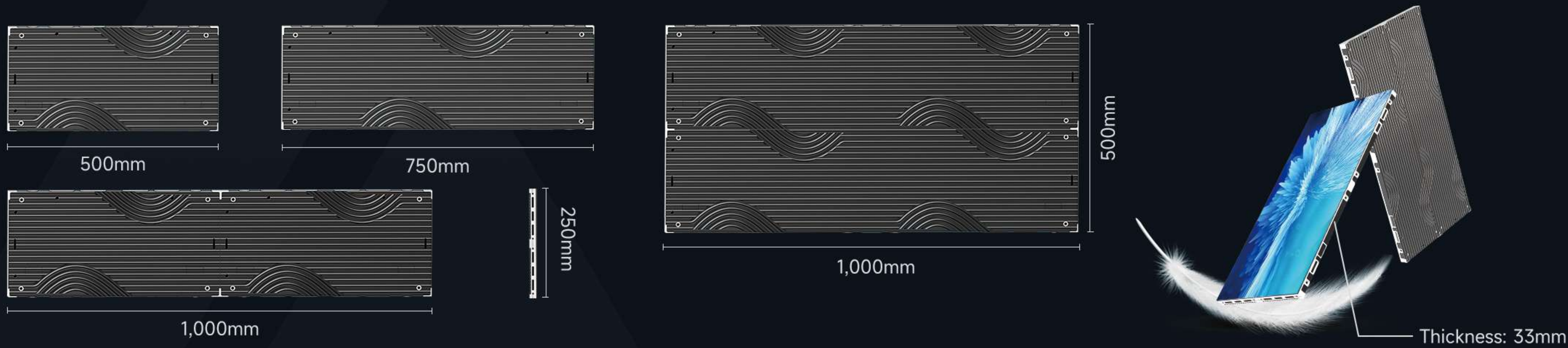
MS Series

Pixel Pitch (mm) : 1.25 / 1.5,625 / 1.95 / 2.5 / 2.604 / 2.976 / 3.91

Cabinet Size (mm) : 500*250 / 750*250 / 1,000*250 / 1,000*500

Ultra-Thin & Lightweight

The MS Series indoor LED display offers pixel pitches of 1.25, 1.5, 1.625, 1.95, 2.5, 2.604, 2.976, and 3.91mm. Its die-cast aluminum integrated cabinet is highly precise with a total thickness of only 33mm. Cabinet weights are 3.0kg for 500×250mm, 4.0kg for 750×250mm, 5.6kg for 1,000×250mm, and 10.5kg for 1,000×500mm, making installation effortless.



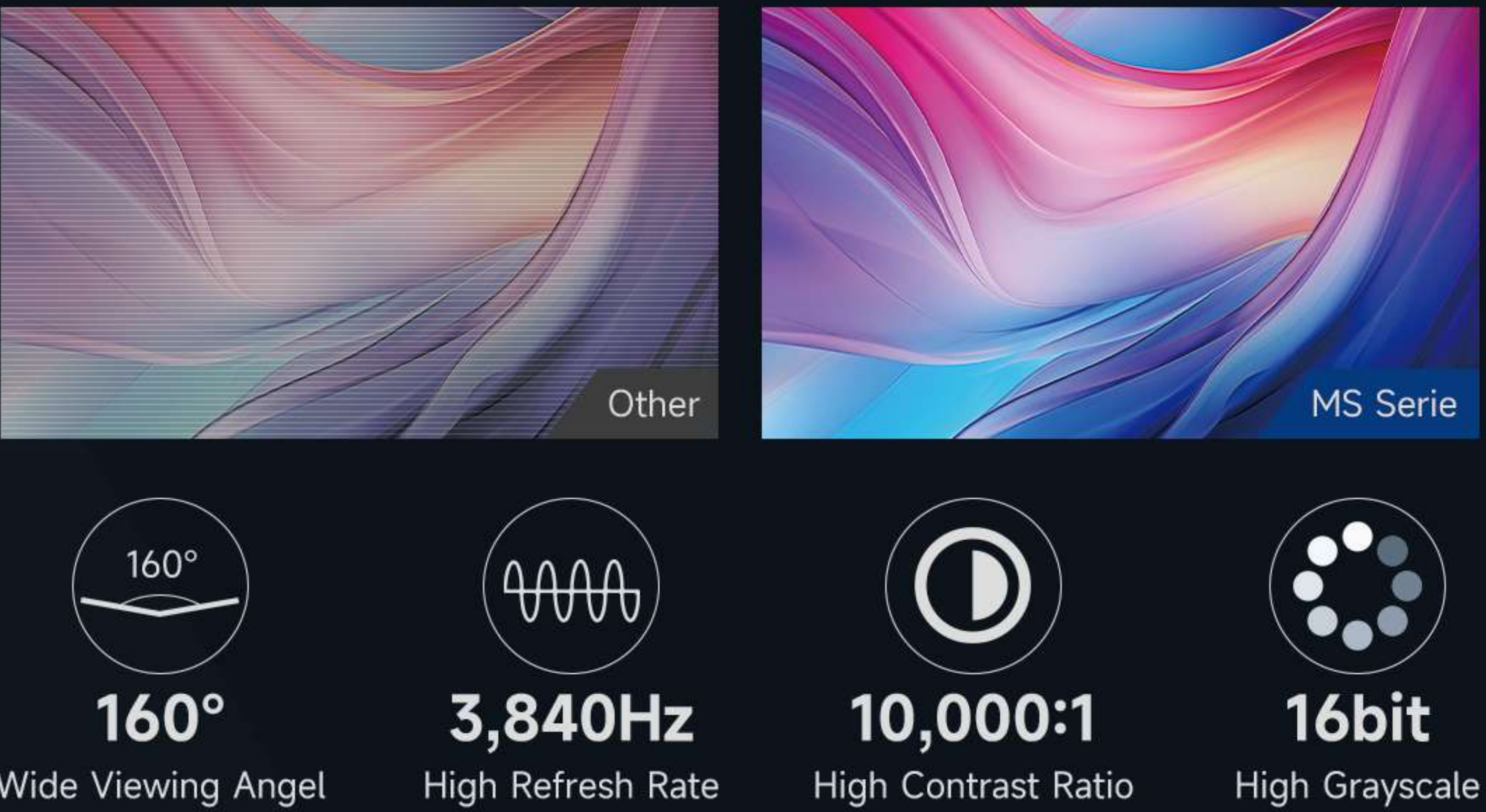
Front Maintenance

The MS Series allows quick front access for maintenance without removing the entire cabinet, ensuring minimal downtime.



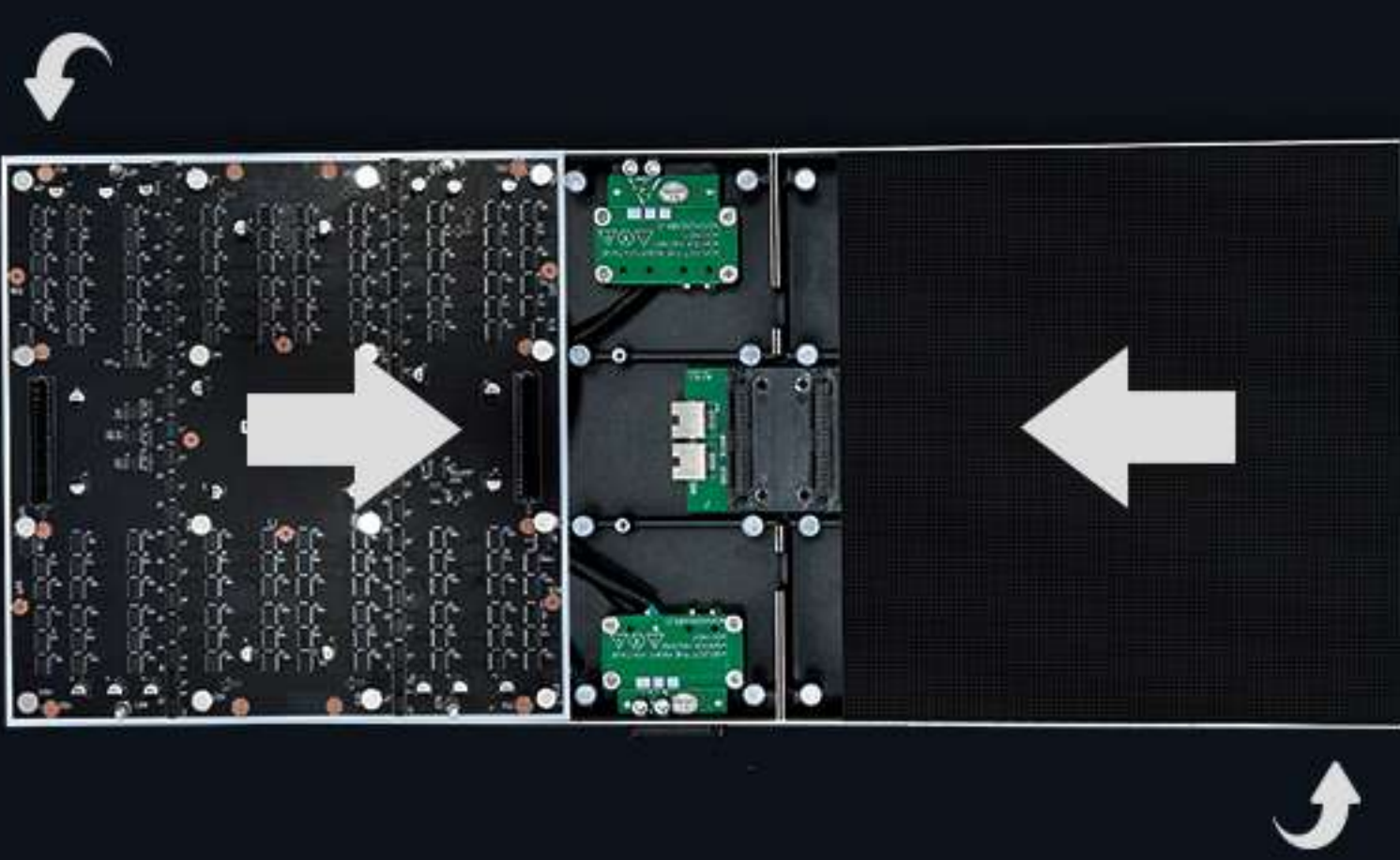
Superior Display Performance

Enjoy vibrant visuals with high grayscale, dazzling colors, and no scanning lines in photography. Features include a 160° viewing angle, 3,840Hz high refresh rate, 10,000:1 contrast ratio, and 16-bit high grayscale for realistic and delicate display effects.



Innovative Module Design

Modules maintain consistent color and brightness even when rotated. Hard-connected to the cabinet with magnetic suction automatic adsorption, they are secure, reliable, and can rotate 90° for flexible installation. Wireless module connection further simplifies setup.



- The module can rotate 90 degrees
- Automatic magnetic installation
- Wireless module connection

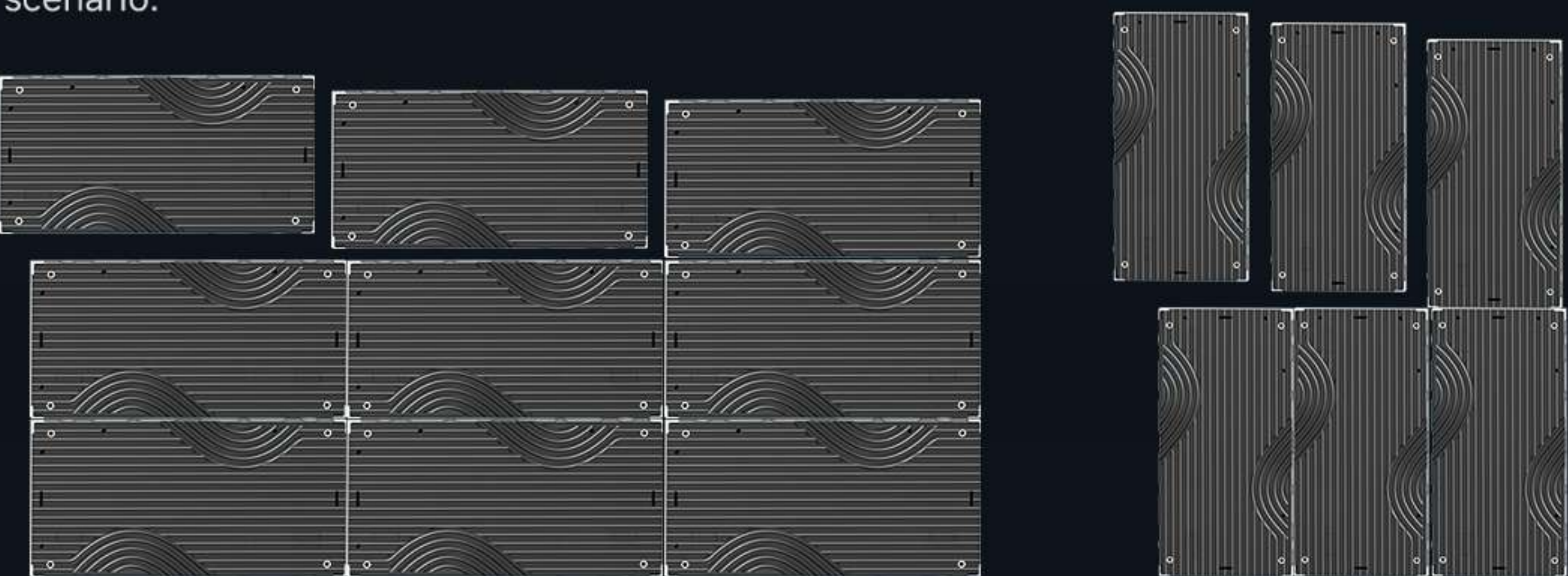
Smart Cabinet Structure

Integrated power and signal quick plug interface reduces internal wiring, speeding up installation. High-precision die-cast cabinets include positioning columns, eagle hook locks, and reinforcement ribs to ensure flatness and efficient assembly.



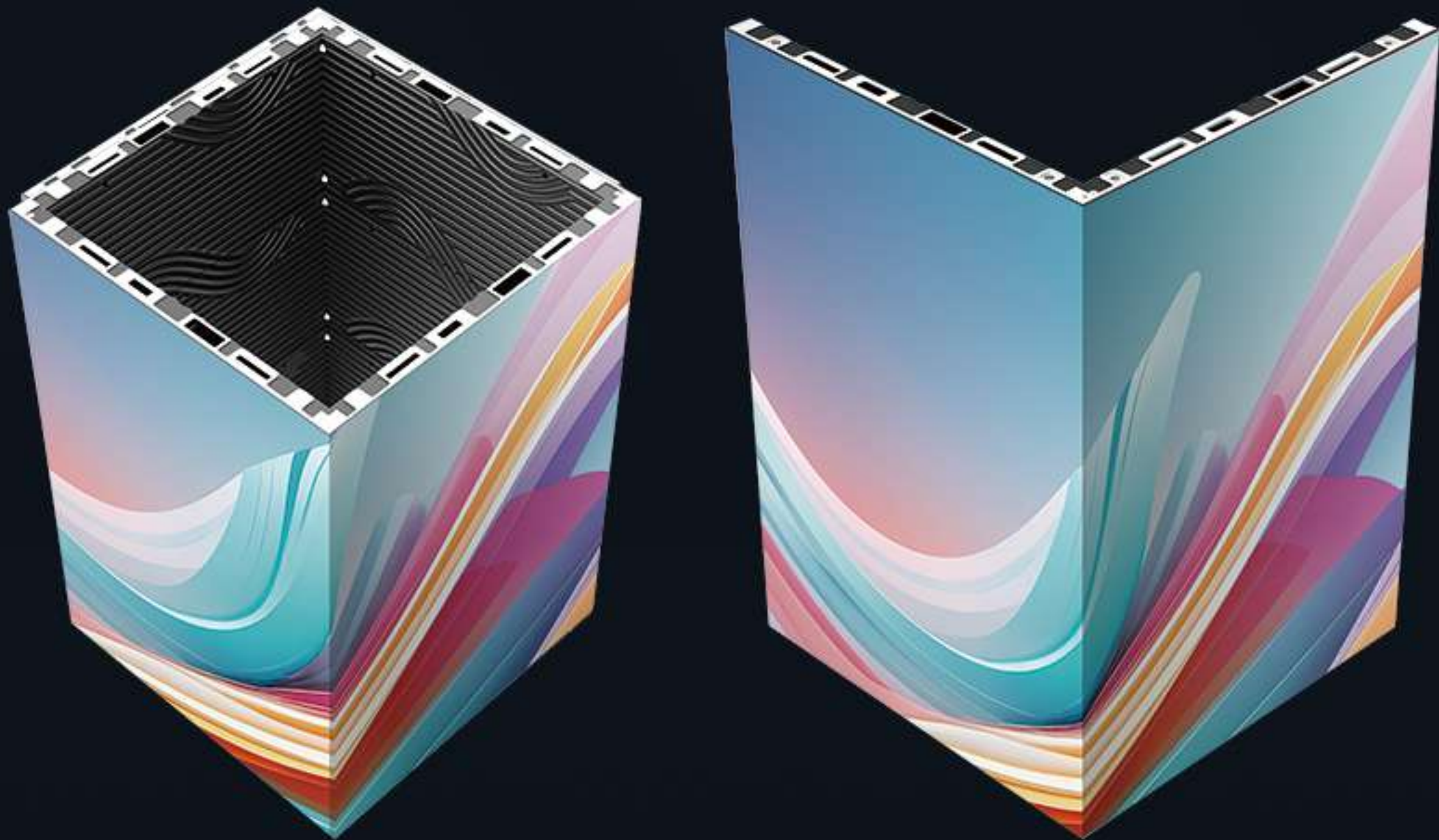
Flexible Free Splicing

Cabinets in sizes 500×250mm, 750×250mm, 1,000×250mm, and 1,000×500mm can be spliced horizontally or vertically, offering limitless possibilities for creative displays in any scenario.



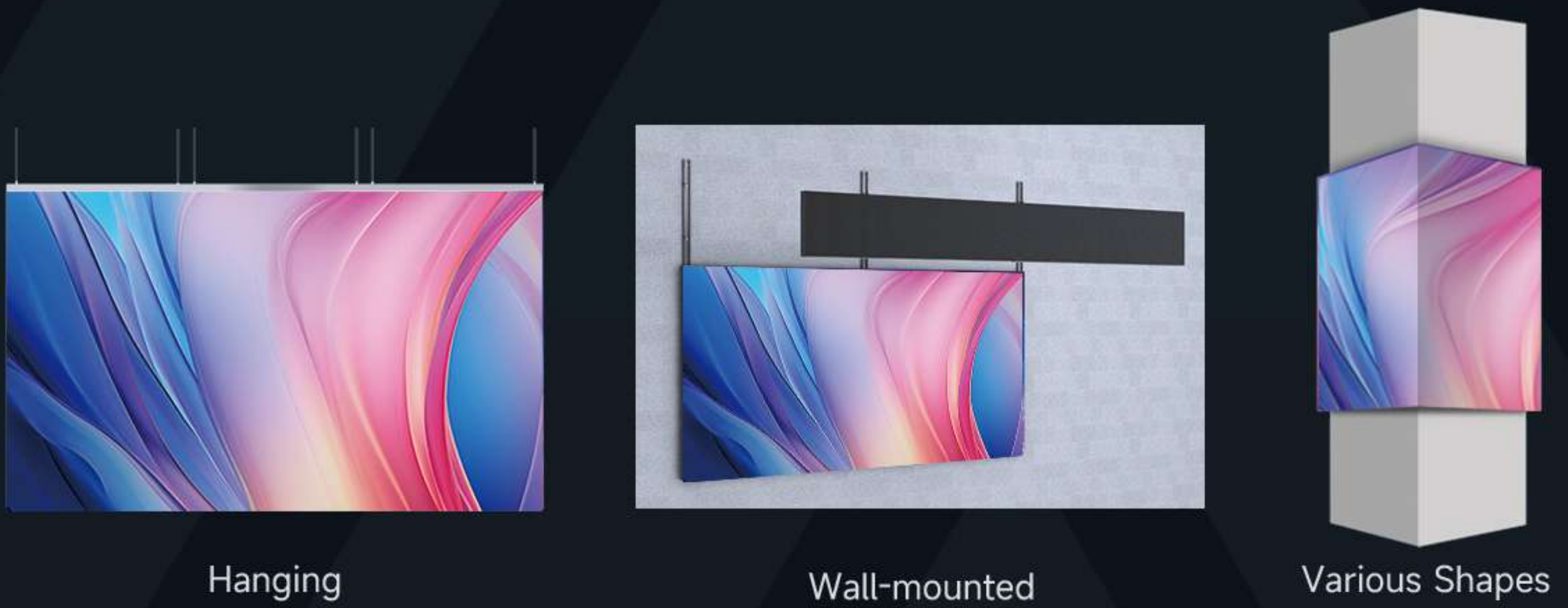
Creative Shapes, Infinite Imagination

Supports right angles, columns, and other geometric arrangements, allowing innovative configurations for striking visual impact.



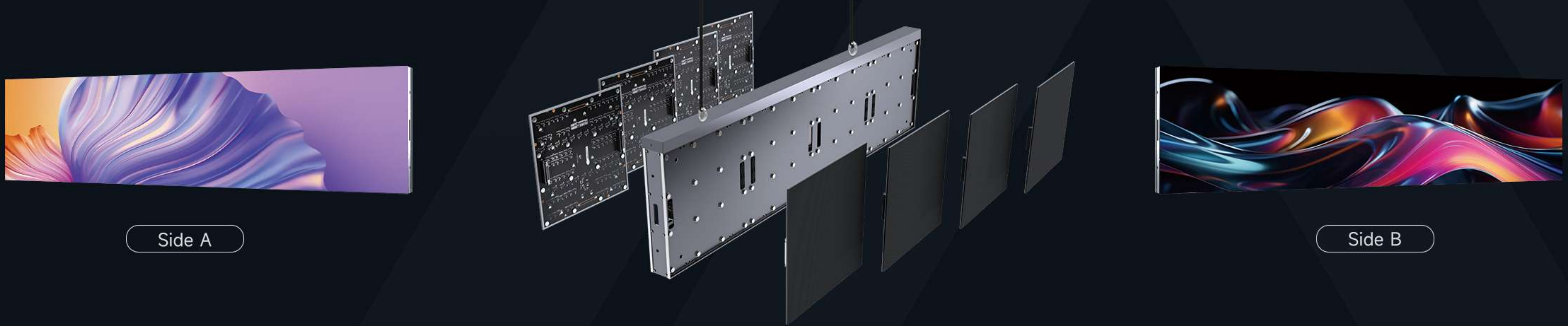
Versatile Installation Options

Supports suspended installation, wall-mounted setups, and column-shaped arrangements, adaptable for a wide range of environments.



Dual-Sided Display Option

The MS Series can be configured for thin dual-sided displays (only 54mm), offering lightweight and perfect hanging solutions for double-sided viewing.



Application Scenarios

Ideal for conference rooms, retail spaces, exhibitions, museums, showrooms, and creative installations, delivering stunning visual experiences in every setting.



Parameters

Items	MS12	MS15	MS19	MS25	MS26	MS29	MS39
Pixel Pitch (mm)	1.25	1.5625	1.95	2.5	2.604	2.976	3.91
LED Type	SMD1010 (GOB)	SMD1212 (GOB)	SMD1515	SMD1515	SMD1515	SMD1515	SMD1515
Pixel Density (pixels/m ²)	640,000	409,600	262,144	160,000	147,456	112,896	65,536
Module Resolution (W×H)	200×200	160×160	128×128	100×100	96×96	84×84	64×64
Module Size (W×H)	250×250						
Cabinet Size (mm)	500×250×33 / 750×250×33 / 1,000×250×33 / 1,000×500×33						
Double-Sided Cabinet Size (mm)	500×250×54 / 750×250×54 / 1,000×250×54						
Module Arrangement (W×H)	Standard Cabinet: 2×1 / 3×1 / 4×1 / 4×2; Double-Sided Cabinet: 2×1 / 3×1 / 4×1						
Cabinet Resolution (W×H)	400×200 600×200 800×200 800×400	320×160 480×160 640×160 640×320	256×128 384×128 512×128 512×256	200×100 300×100 400×100 400×200	192×96 288×96 384×96 384×192	168×84 252×84 336×84 336×168	128×64 192×64 256×64 256×128
Double-Sided Cabinet Resolution (W×H)	400×200 600×200 800×200	320×160 480×160 640×160	256×128 384×128 512×128	200×100 300×100 400×100	192×96 288×96 384×96	168×84 252×84 336×84	128×64 192×64 256×64
Maintenance	Front						
Cabinet Material	Standard Cabinet: die-cast aluminum; Double-Sided Cabinet: aluminum profile						
Single-Point Brightness Correction	Yes						
Brightness (nits)	600	600	800	800	800	800	800
Color Temperature (K)	3,200–9,300 (adjustable)						
Viewing Angle (H/V)	160°/160°						
Brightness/Color Uniformity	≥97%						
Contrast Ratio	10,000:1						
Frame Rate (Hz)	50/60						
Scan Mode	1/50	1/40	1/32	1/25	1/32	1/28	1/16
Grayscale (bit)	14 / 16 (optional)						
Refresh Rate (Hz)	3,840						
Peak Power Consumption (W/m ²)	Standard Display: 350; Double-Sided Display: 650						
Average Power Consumption (W/m ²)	100–200						
Protection Level	IP31						
Input Voltage	AC90V–AC264V, 47–63Hz						
Operating Environment	-20 °C ~ 60 °C, 10% ~ 85% RH						
Certifications	CCC, CE, RoHS, FCC, CB, TUV, IEC						

* The specifications are for reference only. Actual parameters may vary depending on the specific model or contractual agreement.



Bring your ideas into reality

Shenzhen MileStrong Conventional Display Division

Building 4, Yinjin Technology Industrial Park,
Fengjing South Road, Hewan Community,
Matian Subdistrict, Guangming District, Shen-
zhen, Guangdong, China

Shenzhen MileStrong Transparent Display Division

3/F, Tianyou Building, Yuekang Road, Bao'an
District, Shenzhen, Guangdong, China

Shenzhen MileStrong XR/Immersive Display Division

3/F, Building 5, Xinlianhe Industrial Park, Bao'an
District, Shenzhen, Guangdong, China

Hunan MileStrong COB Display Division

No.533, Torch Road 4, Songshan Road Street,
Tianyuan District, Zhuzhou, Hunan, China

Shenzhen Milestrong Technology Co., Ltd.



Website



WhatsApp



WeChat



TikTok



YouTube