



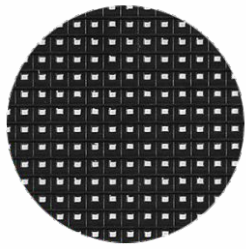
*Bring Your ideas
Into Reality*

Outdoor LED Display

SL Series Design

(3.9 1/4.8 1/6.25/7.8 1/ 10.42)

- Module Size: 500X250 mm
- Cabinet Size: 1000X1000 mm



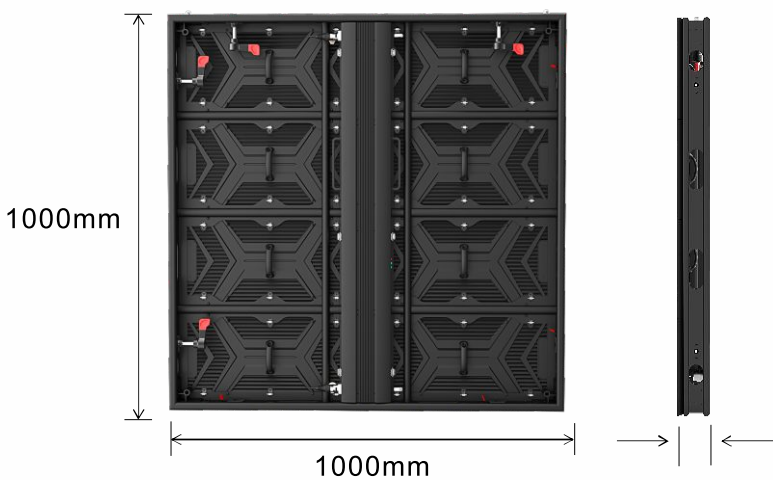
Front Side

Matte Corrugation Module Mask
Achieves Ultra-high Contrast



Back Side

Aluminum profile cabinet is light weight, which saves transportation cost and installation cost



Cabinet Side



Weight is **35%**
lighter

1000X1000 22.5kg

Energy Saving SL Panel



Electric Power Saving up to

30%

SL series	1 sqm
Average power consumption	100-200
Max power consumption	650

Traditional LED Panel



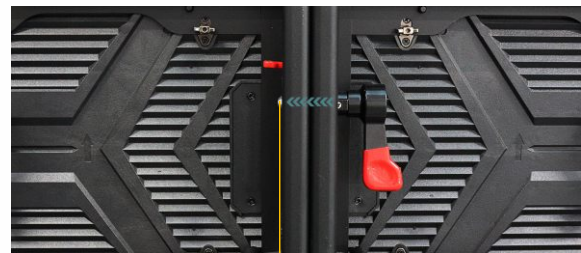
Traditional LED panel	1 sqm(w/m ²)
Average power consumption	425
Max power consumption	1000



IP65 Waterproof for both front and back side

Fast Installation

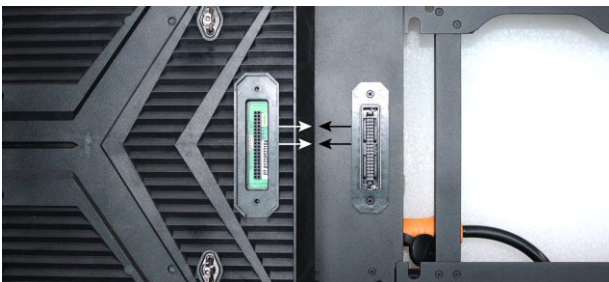
Stainless fast lock High precision aluminum alloy panel Quick assembly . Good flatness



Stainless Steel Lock Catch

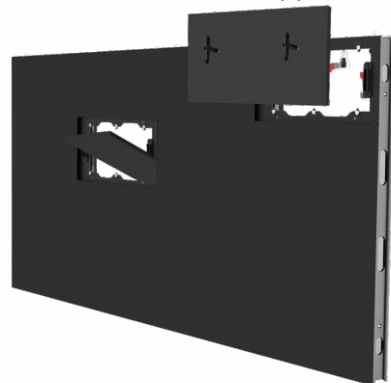
Hot-Swapping

Hard connection supports full front access



Full-Front and Rear Maintenance

Suits for all outdoor applications



160° Super wide viewing angle

Perfect Resentation Of Images From Any Angle



High Refresh Rate

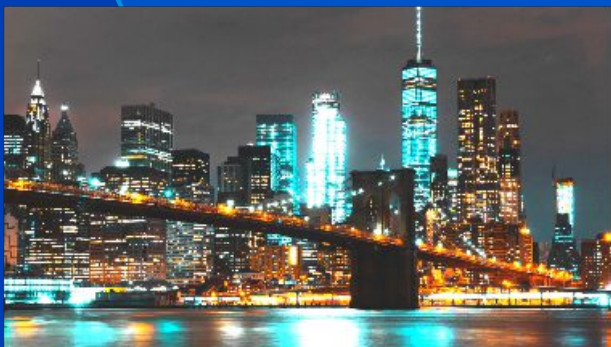


High Refresh Rate



Low Refresh Rate

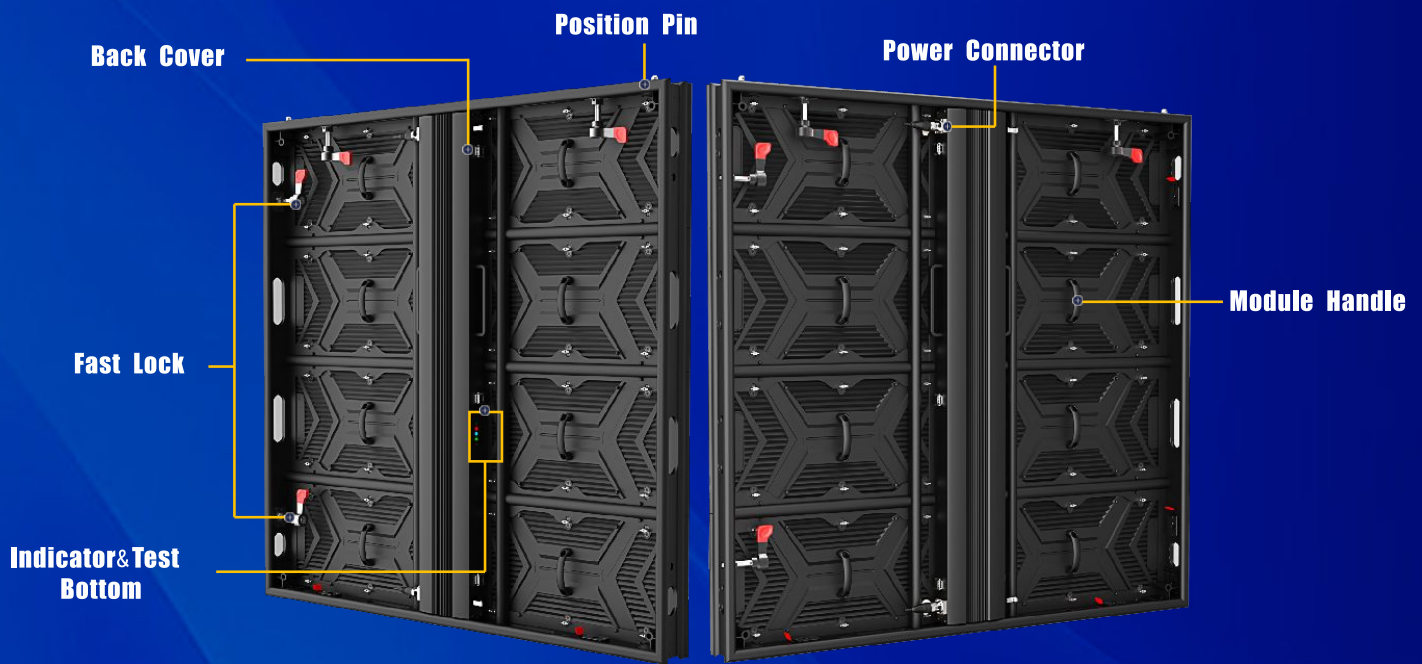
High Grey Scale



High Refresh Rate



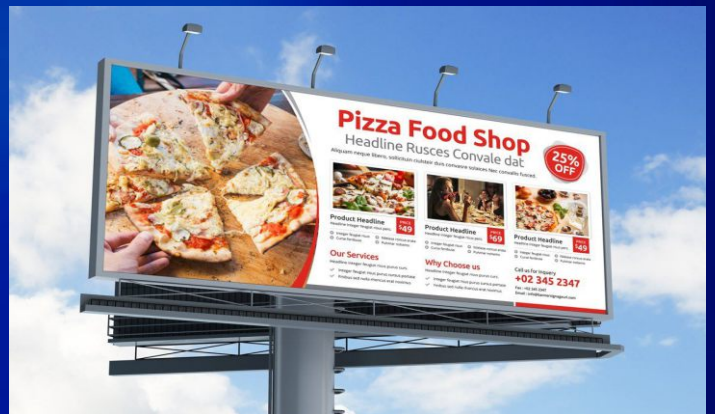
Low Refresh Rate



Pixel Pitch	P3.91	P4.81
SMD Type	SMD1921	SMD1921
Physical Density(dots/m ²)	65536	43264
Module Resolution	128X64	104X52
Panel Dimension(WxH/mm)	500X250	500X250
Module Size(mm)	1000X1000X83	1000X1000X83
Panel Resolution	256X256	208X208
Module quantity(WxH)	2X4	2X4
Panel Weight(kg)	22.5	22.5
Maintenance Mode	Front & Rear	Front & Rear
Cabinet Material	Aluminum	Aluminum
Brightness(Nits)	6000	6000
Color Temperature(K)	1000-18500 Adjustable	1000-18500 Adjustable
Viewing Angle(H/V)	140°/160°	140°/160°
Best Viewing Distance	4-100m	4-100m
Contrast Ratio	10000 : 1	10000 : 1
Frame -Changing Frequency(Hz)	50/60	50/60
Driving Mode	Constant current 1/16	Constant current 1/13
Grey Level	scale	scale
Refresh Rate(Hz)	16bit	16bit
Max Power Consumption(W/m)	3840	3840
Avg Power Consumption(W/m)	650	650
Grude	100-200	100-200
Power Supply Requirements	AC90-264V,47-63Hz	
Working Temp/Humidity(°C/RH)	-20~60°C/10%~85%	
Storage Temp/Humidity(°C/RH)	-20~60°C/10%~85%	
Cert	CCC/CE/RoHS/FCC/CB/TUV/IEC	

Pixel Pitch	P6.25	P7.81	P10.42
SMD Type	SMD2727	Md2727	SMD2727
Physical Density(dots/m ²)	25600	16384	9216
Module Resolution	80X40	64X32	48X24
Panel Dimension(WxH/mm)	500X250	500X250	500X250
Module Size(mm)	1000X1000X83	1000X1000X83	1000X1000X83
Panel Resolution	160X160	128X128	96X96
Module quantity(WxH)	2X4	2X4	2X4
Panel Weight(kg)	22.5	22.5	22.5
Maintenance Mode	Front & Rear	Front & Rear	Front & Rear
Cabinet Material	Aluminum	Aluminum	Aluminum
Brightness(Nits)	6000	6000	6000
Color Temperature(K)	1000-18500 Adjustable	1000-18500 Adjustable	1000-18500 Adjustable
Viewing Angle(H/V)	140°/160°	140°/160°	140°/160°
Best Viewing Distance	6-150m	8-150m	10-200m
Contrast Ratio	10000 : 1	10000 : 1	10000 : 1
Frame -Changing Frequency(Hz)	50/60	50/60	50/60
Drving Mode	Constant current 1/8	Constant current 1/8	Constant current 1/8
Grey Level	scale	scale	scale
Refresh Rate(Hz)	16bit	16bit	16bit
Max Power Consumption(W/m)	3840	3840	3840
Avg Power Consumption(W/m)	650	650	650
Grude	100-200	100-200	100-200
Power Supply Requirements	AC90-264V,47-63Hz		
Working Temp/Humidity(°C/RH)	-20~60°C/10%~85%		
Storage Temp/Humidity(°C/RH)	-20~60°C/10%~85%		
Cert	CCC/CE/RoHS/FCC/CB/TUV/IEC		

Case Gallery



Case gallery

